

PART OF THE NE. 1/4, OF SECTION 28, T.6N., R.2W., S.L.B. & M.

796

# WINSTON PARK SUBDIVISION

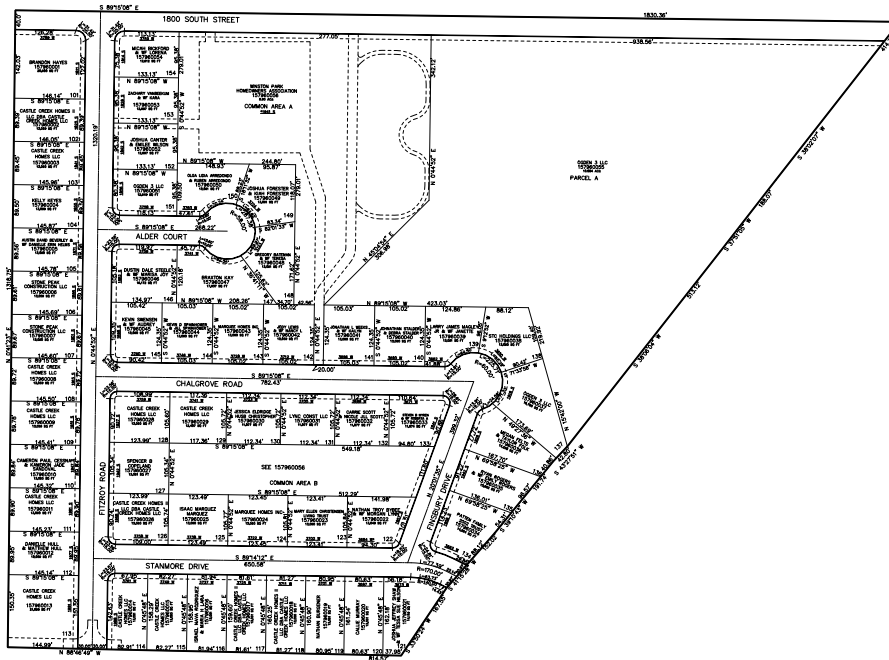
IN WEBER COUNTY

TAXING UNIT: 514

SCALE 1" = 200'

SEE PAGE 78-1

SEE PAGE 78-1



SEE PAGE 78-1

SEE PAGE 78-1

10' UTILITY & DRAINAGE EASEMENTS EACH  
SIDE OF PROPERTY LINES AS INDICATED  
BY DASHED LINES EXCEPT AS OTHERWISE  
SHOWN.

FOR COMPLETE SURVEY DATA SEE  
ORIGINAL DEDICATION PLAT IN  
BOOK 93, PAGE 57-58 OF RECORDS.

ADDRESS AFFIDAVIT 63554565, 3340225